

METHODS FOR BINDING/FACING: PIECED/CONTEMPORARY /ART QUILTS

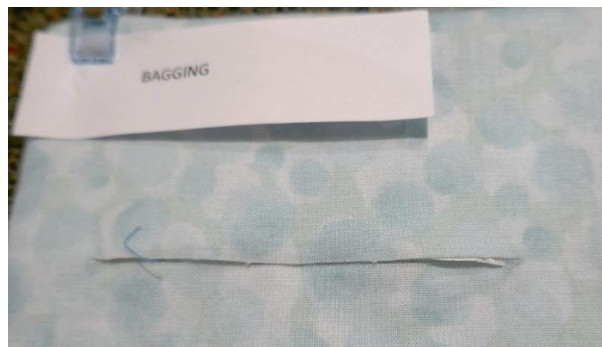
Angles edges; mitring points/dips/scallops

Use strips cut on the bias or cross to enable them to stretch round the edges. (Bias is 1-45degrees and the Cross is exactly 45 degrees. The cross has the maximum stretch.



Bagging

Make the quilt backing exactly the same size as the front. With R.S. together make a 1/4" seam around the edge leaving NO gaps. Somewhere on the W.S. of the backing iron a strip of Bondaweb etc. wide enough for the size of the quilt to be turned out the correct way. Cut a slit in the middle of the Bondaweb on the longest side. Turn out and iron the Bondaweb to the wadding, making sure that the slit is joined by ironing. This slit can often be hidden by the label or the sleeve



Couched piping

Single 1 1/2" strip to cover piping, using a zipper foot. Sew as close to the binding as is possible and in a matching thread to the fabric. Single 1 3/4" strip, place on edge of quilt and again sew close to the piping; roll over and hand stitch in place.



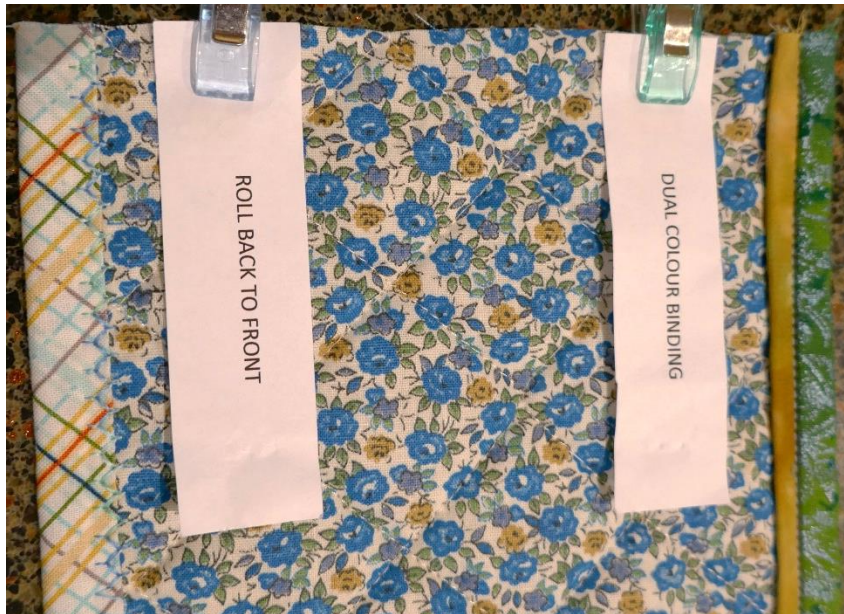
Decorated Single Binding Fold the binding in half and again fold in edges; add decoration to one side and sew along the crease. Add binding on the normal way BUT sewing from the W.S. of the quilt top stitch in place.



Scrappy binding This can be of varying widths. Use complimentary or contrasting fabrics to make the required length of binding required; this may be squares, rectangles, diagonal strips etc. It should be wide enough for the seam, 2 folds + ¼" -1/2 ". Sew as normal on R.S. and turn over to W.S.; using a machine decorative stitch with a straight edge on the L.H.S. to be placed in the ditch; when complete trim the back as near to the edge as possible.

Dual colour binding

Sew together 2 strips of fabric, 1" & 2". Sew the 1" strip to the R.S. of the quilt 1/2" from the edge. Fold the larger strip at the edge of the quilt to give the effect you want. Turn under on the W.S. and stitch on the ditch to keep the binding in place.



Roll bring from Front to Back

1 3/4 "strip width. Machine to the back of the quilt and bring forward to the front. Instead of hand sewing the binding, use machine to make a decorative

Facing 1

Machine the edge of the quilt 1/8" in. Cut 5" strip for the binding and iron in half. Place the strips on the R.S. of the quilt and overlap the edges at the corners. Sew around the quilt. Trim the corners and then turn the strips to the back of the quilt, pushing out the corners with a tool to get them square.

Press the edges so that the facing cannot be seen on the R.S. and sew the fold to the back of the quilt. Press well!

Facing 2: Gloria Loughman style & mitred corners

Cut 5" strips for the binding and iron in half. Machine the raw edge to the R.S. of the quilt with a 1/4 seam. Press away from the quilt and then machine a line through the seam at 1/8" in from the seam line.

Pin the 2 sides in place and hand sew into position. Do the same for the top and bottom edges; trim, if necessary to keep the corners as flat as possible. The hanging sleeve must be applied by hand stitching.



Facing 3: with 4 single strips

Cut strips for the 4 sides. Lay on RHS and overlap the corners in sequence. Machine around all 4 sides, then turn to the back, neaten edges and hand catch on the seam allowance to keep the strip on W.S.

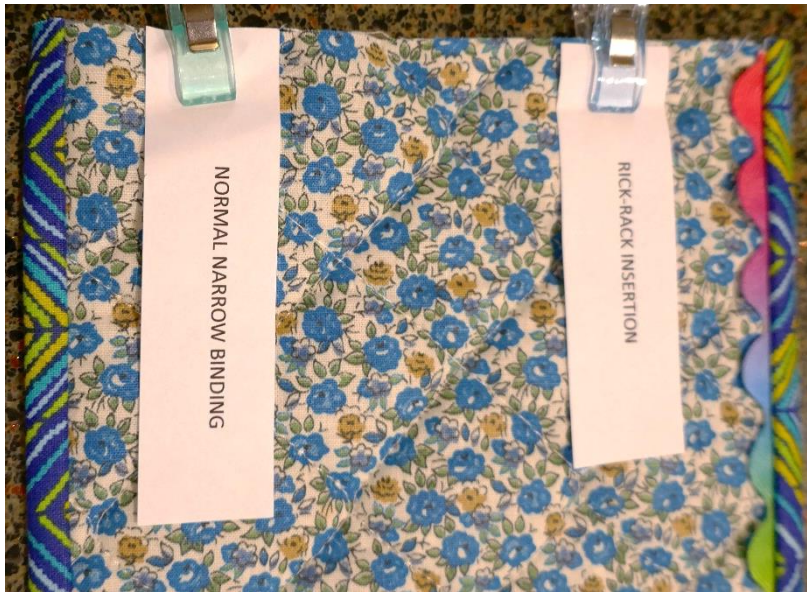


Filip

Place a decorative filip to the R.S. of the quilt to be held in place when machining the binding on the R.S. This can be ribbon, Rick-Rack, lace, etc.

Flange

Fold fabric in half and sew to the R.S. of quilt **in** the ¼" seam allowance. Make the flange larger than the finished binding width. Bind as normal.



Normal binding but more narrow

Work as a normal binding but cut the strips $1 \frac{3}{4}$
Fold in half as normal.

Layers of chenille/ribbon on edge

Use the appropriate foot for the technique you are using, e.g cording foot etc. Lay 3 strands of chenille, wool, textured thread on the W.S. of the quilt and stitch in place using a 3 step zig-zag stitch or honeycomb stitch. Repeat on the R.S. of the quilt.

With ribbon it can be single folded over the edge and stitched in place or a combination of ribbons to give extra decoration. When the final width is complete fold in half, iron and place over the edge of the quilt, Stitch in place.



Pillowcase technique

Cut 2 pieces of binding fabric the width of the quilt and long enough for an additional 3" to be added. The length of the 2 pieces depends upon where you want the envelope to be. Neaten one edge of each piece. Place R.S. of backing to R.S. of quilt and overlap the two pieces. Machine the 4 sides of the quilt with a $\frac{1}{4}$ seam. Turn the quilt through, making sure the corners are square. It is optional to hand stitch $\frac{1}{4}$ " in from the edge on the W.S. to stop the bagging from disappearing.



Prairie Points

Make Prairie Points according to the finished size you require. This will depend on the number you need for the sides of your quilt. Place in position and machine $\frac{1}{8}$ " in from the edge. Then face or bind as usual; if facing the points will be external to the quilt edge, if bound they will lay on the actual quilt forming the decoration.



Satin Stitch

Cut the edges of the quilt accurately. Use an open-toe foot & satin stitch around the edge

Continuous Bias Binding

36 – 40" square of fabric; cut in half in the diagonal; place the 2 piece so that you have 2 top corners and 2 points, one on each side. Sew 14" seam along the top edge and press open

Draw lines 2 ¼" apart & fold to match the drawn lines. Join to make a tube, iron in half and cut strips WITH scissors. Sew on to quilt using a walking foot with the needle position moved to be ¼"

IF sewing to a zig-zag edge work the outer points as normal but on the inner points work to the innermost point, turn the quilt and continue sewing, BUT clip the binding NOT the quilt to make it lie flat.

Hanging Sleeve

Cut or make an 8" strip the width of your quilt; iron in half and fold in the ends to neaten – sewing is optional. Sew to make a circle and iron so that the seam line is in the middle of the depth. Place one edge across the quilt, 1" down from the top and hand sew in place. Place the lower edge of the sleeve 3" down from the top edge to allow the pole to go through and the quilt to hang straight.

There are many sites on the web giving instructions and further ideas of how to finish your quilt – happy searching.

